



GAT MONTHLY MEMBERSHIP PROGRESS REPORT

Results as of: 7/31/2023

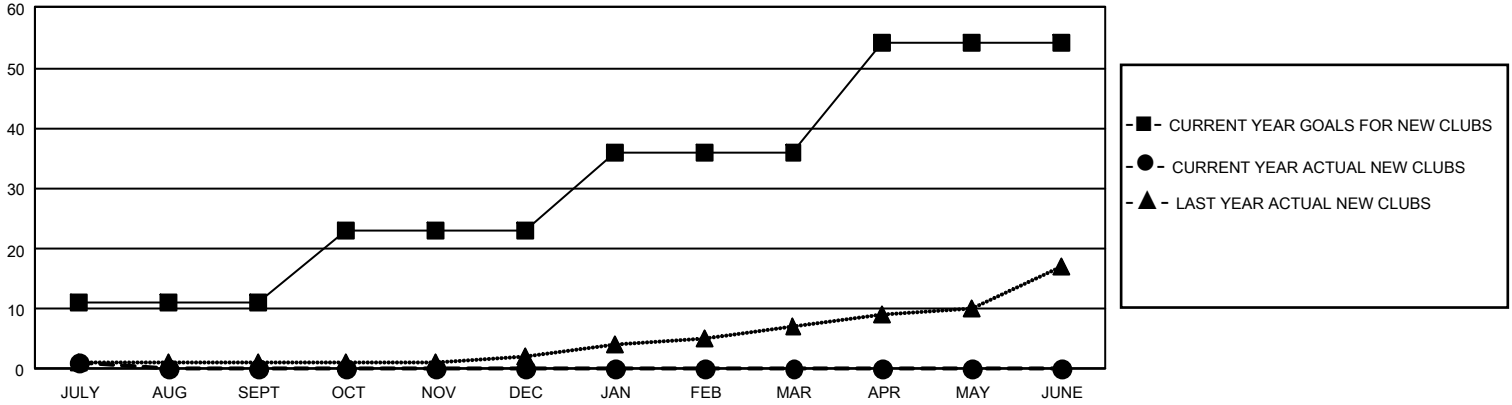
GMT Constitutional Area 4, Group I

REPORT DOES NOT INCLUDE CLUBS IN UNDISTRICTED AREAS.

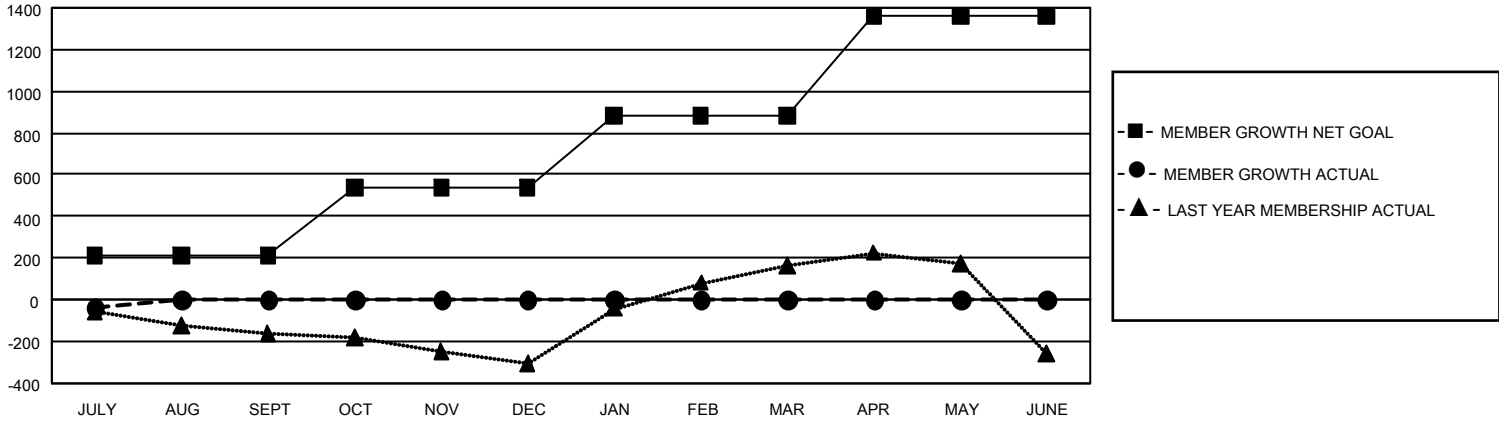
Clubs			
RESULTS FOR 2023-2024			
QUARTER	NEW CLUB GOAL	NEW CLUBS	DROPPED CLUBS
JULY/AUG/SEPT	33	1	4
OCT/NOV/DEC	36	0	0
JAN/FEB/MAR	39	0	0
APR/MAY/JUNE	54	0	0

Members			
RESULTS FOR 2023-2024			
QUARTER	MEMBER GROWTH NET GOAL	MEMBER GROWTH ACTUAL	DROPPED MEMBERS ACTUAL (including transfers)
JULY/AUG/SEPT	213	461	422
OCT/NOV/DEC	324	0	0
JAN/FEB/MAR	344	0	0
APR/MAY/JUNE	477	0	0

GOALS AND ACTUAL NEW CLUBS CUMULATIVE



GOALS AND ACTUAL MEMBERS CUMULATIVE



DROPPED CLUBS: 4	183 CLUBS OF 1,378 ADDED 1 OR MORE NEW MEMBERS	<u>GENDER DISTRIBUTION</u>	
		MALE 27,096 (70.19%)	FEMALE 11,505 (29.80%)
<u>DROPPED MEMBERS</u>		NON BINARY 0 (0.00%)	PREFER NOT TO ANSWER 3 (0.01%)
DECEASED 33	CLICK HERE FOR CUMULATIVE MEMBERSHIP DATA	TOTAL FAMILY UNIT MEMBERS 2,501	
CLUB CANCELLED 0		FAMILY MEMBERS PAYING HALF DUES 1,284	
OTHER 388			
TOTAL 421			